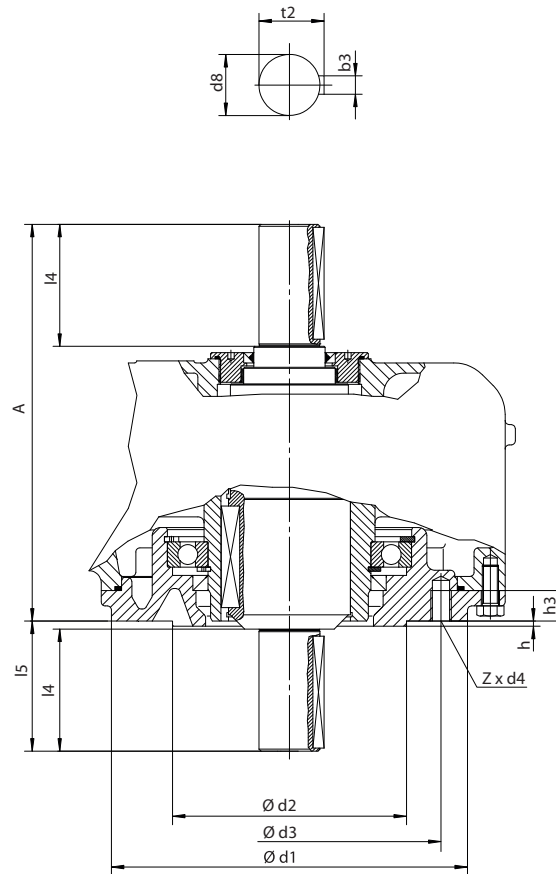


Dimensions Output drive type DD, shaft end bottom and top



Dimensions	GK 25.2	GK 30.2	GK 35.2	GK 40.2
EN ISO 5210	F25	F30	F35	F40
A	339	391	–	466
b3	14	18	–	22
Ø d1	300	350	–	475
Ø d2	200	230	–	300
Ø d3	254	298	–	406
d4	M16	M20	–	M36
Ø d8	50	60	–	80
h	5	5	–	5
h3	28	30	–	60
l4	110	120	–	120
l5	117	127	–	134
t2	53.8	64.4	–	85.4
Z	8	8	–	8