

Mounting positions Multi-turn actuator with multi-turn gearbox

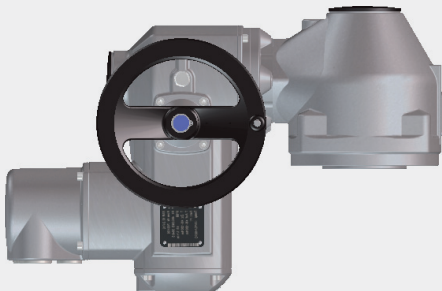
Mounting position A



Mounting position B¹⁾



Mounting position C



Mounting position D



When selecting the mounting position, please consider the space constraints at the place of installation.
Mounting positions can easily be changed at a later date.

1) **Caution:** Mounting position B is not possible for actuators with specified handwheel sizes and rising valve stem.